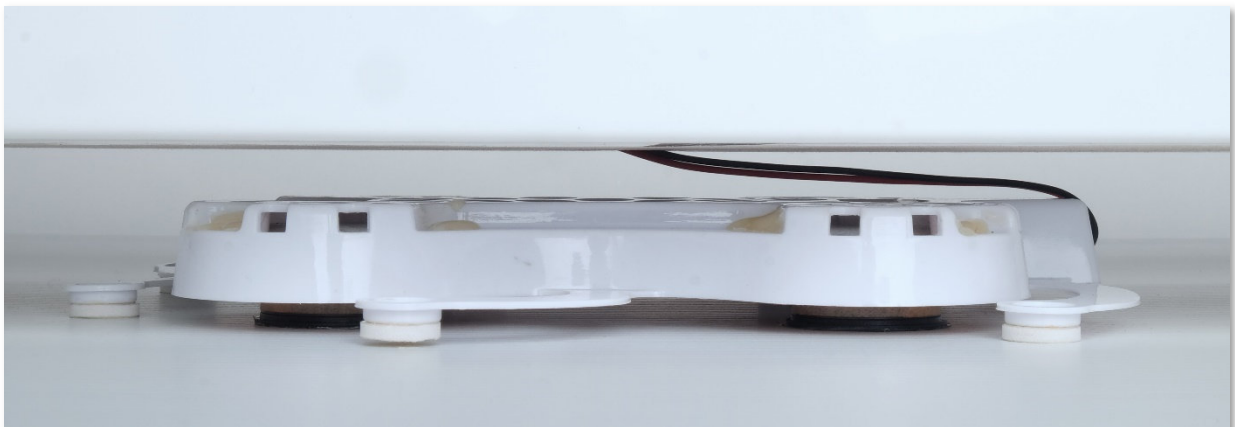




“What makes a sound panel different to a conventional ceiling loudspeaker?”

A sound panel generates sound in a completely different way to a conventional loudspeaker, resulting in an efficient and even spread of sound over a large area for superior performance, with a streamlined unobtrusive appearance.

- A very wide dispersion pattern ensures excellent coverage even with low ceilings
- Good propagation of sound over distance; fewer panels are required compared to conventional loudspeakers
- No need to cut holes in tiles as the sound panel simply replaces a conventional 600x600mm ceiling tile
- Fits an Armstrong suspended ceiling, providing a uniform and unobtrusive look once installed into the ceiling grid
- The sound panel cassette is available with or without an Armstrong Microperforated Tile
- Suitable for 100 Volt line or low impedance sound systems



CS1000 Series



Sound Masking, Public Address & Background Music

The CS1000 Sound Panel is fitted with a single iCeilings® 8W transducer offering superior combined performance for background music, public address, sound masking and active acoustics to enhance privacy, comfort and workplace effectiveness.

CS1000 Series – Specifications

- Input: 100v or 8Ω
- Power handling: 8w
- Tappings at 8/4/2/1w
- Dispersion: 180°

4.1. CS1000

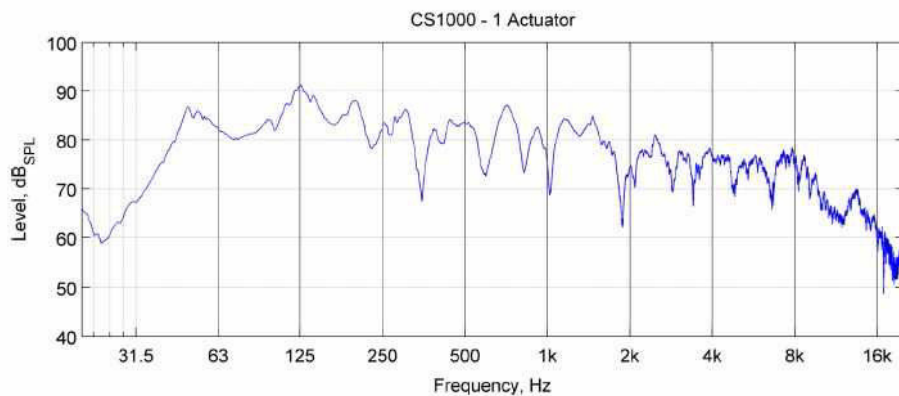


Figure 5. On-axis sensitivity for the CS1000 with 1 actuator

CS4000 Series



Higher Performance Music & Voice Reproduction for Education / Conference Centres and Larger Spaces

Fitted with four 8W iCeilings® transducers, the CS4000 Sound Panel provides enhanced output and frequency response. Ideal for performance AV and public address within corporate, educational and retail environments.

CS4000 Series – Specifications

- Input: 100v or 8Ω
- Power handling: 30w
- Tappings at 30/20/10/5w
- Dispersion: 180°

4.2. CS4000 – 4 actuators

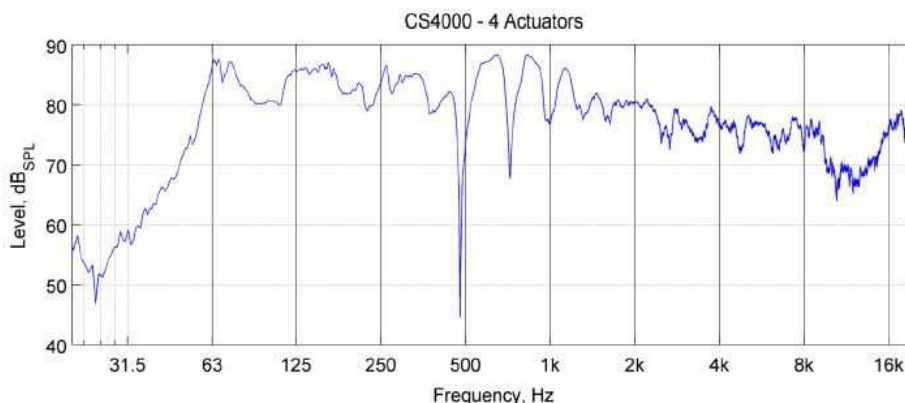


Figure 7. On-axis sensitivity for the CS4000 with 4 actuators